



My

TUSCAN

EXPERIENCE

Feed Art
Meet Art

HOTEL 
BEL SOGGIORNO 


RelaisCappuccina
S A N G I M I G N A N O


Relais
Della Rovere
★ ★ ★ ★



***HOTEL SOVESTRO
RISTORANTE DA PODE


★ ★ ★ ★
Villa San Lucchese
✦ HOTEL ✦

HOTEL BELSOGGIORNO

Luca Canavicchio
with iSculpture Gallery
"BESTIARY"
#animals #ceramics #middle ages #experiment

Fabrizio Lucchesi
with iSculpture Gallery
"TUSCANY REVISIONED WITH CERAMICS"
#ceramics #hills #tuscany #colors

Simona Ragazzi
with iSculpture Gallery
"ART TECHNIQUES"
#colors #techniques #sculpting #clay #sand

RELAIS DELLA ROVERE

Matteo Cocci
with Francesca Sensi "Arte a Colori"
"BACK TO CHILDHOOD WITH PAINTING"
#paper #monotype #colors #joy #childhood

Irene Giannaccini
with iSculpture Gallery
TECHNIQUES OF MARBLE'S MANUFACTURING
#marble #techniques #sculpting #water #sand

Tommaso Santucci
with Francesca Sensi "Arte a Colori"
"OBJECTS RELIVED THROUGH THE EMOTIONAL DIARY"
#pen #scotch-tape #recycled material #horrorvacui

HOTEL SOVESTRO

Marco Cipolli
with iSculpture Gallery
"THE TRADITIONAL CERAMICS REVISITED"
terracotta #pinocchio #ceramics #tradition #colors

Marco Manzella
with Francesca Sensi "Arte a Colori"
"TRADITIONAL PAINTING"
#powders #ancient techniques #painting #fiction

Alessandro Marzetti
with iSculpture Gallery
"THE ALABASTER FROM VOLTERRA MEETS SOCIAL"
#alabaster #integration #body #sculpting

HOTEL VILLA SAN LUCCHESI

Elisa Bertaglia
with Francesca Sensi "Arte a Colori"
DRAWING
#charcoal #paper #psychology #fanatsticworlds

Nicola Bertellotti
with Francesca Sensi "Arte a Colori"
"CAPTURING ITALIAN ABANDONED PLACES"
#photography #danger #shot #abandon #villa

Susan Leyland
with Francesca Sensi "Arte a Colori"
"THE ITALIAN SCULPTURE"
#white #impruneta #horse #clay #hands



Presents:

Feed Art Meet Art

June - October 2014

In Collaboration with:



Regione Toscana



REPUBBLICA ITALIANA



Unione Europea



FRANCESCA SENSİ ARTE A COLORI



Italian Contemporary Sculpture Gallery



MY TUSCAN EXPERIENCE

The identity of the *Valdelsa* is based on an immense heritage, tangible and intangible, which testifies an individuality and peculiar traits that must be protected, preserved, promoted and developed.

The centres of excellence located in the territory are a huge advantage in terms of tourist appeal and attract every year a growing number of visitors. The attractiveness of a location depends not only on the peculiarities of the various destinations but, from the perspective imposed by globalization, is also a result of the tools used to enable and promote the fruition of the tourism services.

The technology transfer in the field of tourism then becomes of primary importance.

New technologies, developed initially for other sectors, are imported and applied to the tourism industry, triggering new strategic processes of innovation and changing the approach to tourism of the tourists themselves.

The Valdelsa project is part of an initiative for the development of sustainable tourism promoted by the Regione Toscana. The project promotes the vision of sustainability, competitiveness, technology transfer and above all is based on the partnership between the tourism businesses that have started the project.

The purpose of the initiative promoted by the Regione Toscana with which Hotel Bel Soggiorno, Hotel Sovestro, Relais della Rovere, Relais Cappuccina and Hotel Villa San Lucchese have launched and developed this project is to trigger new strategic processes of qualification and innovation of the small and medium enterprises in the tourism industry, directing business decisions towards investments for the creation of new products and services, stimulating the aggregation of companies through forms of strategic alliance on specific issues and promoting the sustainability and competitiveness of the tourism services.

A work of art transmits and expresses messages and feelings, almost always by itself, without the presence of its author next to it. But knowing the genesis of the artwork (whose hands created it? which thoughts originated it?) is a special experience, and in our case even a social experience. It's an experience we have proposed through a series of meetings taking shape in the collective exhibition Feed Art_Meet Art.

Organised under the High Patronage of the Italian Republic, of the European Union and of the Region of Tuscany, the project "My Tuscan Experience", of which this exhibition is the final act, has involved 5 high quality tourist accommodations, 2 young and lively art galleries, 14 Tuscan artists: a common event and a project created for a selected audience choosing *Valdelsa* as its aim, with all its quality aspects.

There is a second theme and a leitmotiv in this exhibition: the dictionary of the words used by the artists to describe their work, that has united and sometimes divided the description of the works of art. The instinctive translations of the words into the different languages spoken by the people who were present, is an act to show that art does not need google-translation and perfectionism, but it needs to find itself within its group and its social background. Each artist has a verbal tag*: a list of terms and expressions allowing us to write down the different ways of saying belonging to the foreign guests, and which has an interest in giving the work of art "created in Tuscany" a non-provincial understanding and interpretation.

The hotels: RelaisdellaRovere, Sovestro, Villa San Lucchese, Bel Soggiorno have made their rooms and their professionalism available for a warm welcome, and the artists of the different Galleries have made it special to exchange visual and verbal contacts, firstly taking part in the conversation and in the research.

Meet Art_Feed Artis a collective exhibition conceived for enhancing Tuscan excellencies and it represents the start of a new project called "Experiential Tourism".



HOTEL 
BEL SOGGIORNO

with

Luca Canavicchio
Fabrizio Lucchesi
Simona Ragazzi

Hotel Bel Soggiorno

The Hotel Bel Soggiorno*** is located on the main street of the old town, amongst typical souvenir shops, museums, art galleries and all the main vantage points. A bus-stop and a public parking lot are just 100 metres from our hotel. Housed in a thirteenth century building, the structure offers 21 comfortable and clean rooms with ensuite facilities, air conditioning, colour tv and telephone. Many of them overlook the marvelous tuscan countryside.



Luca Canavicchio



Fabrizio Lucchesi

Simona Ragazzi

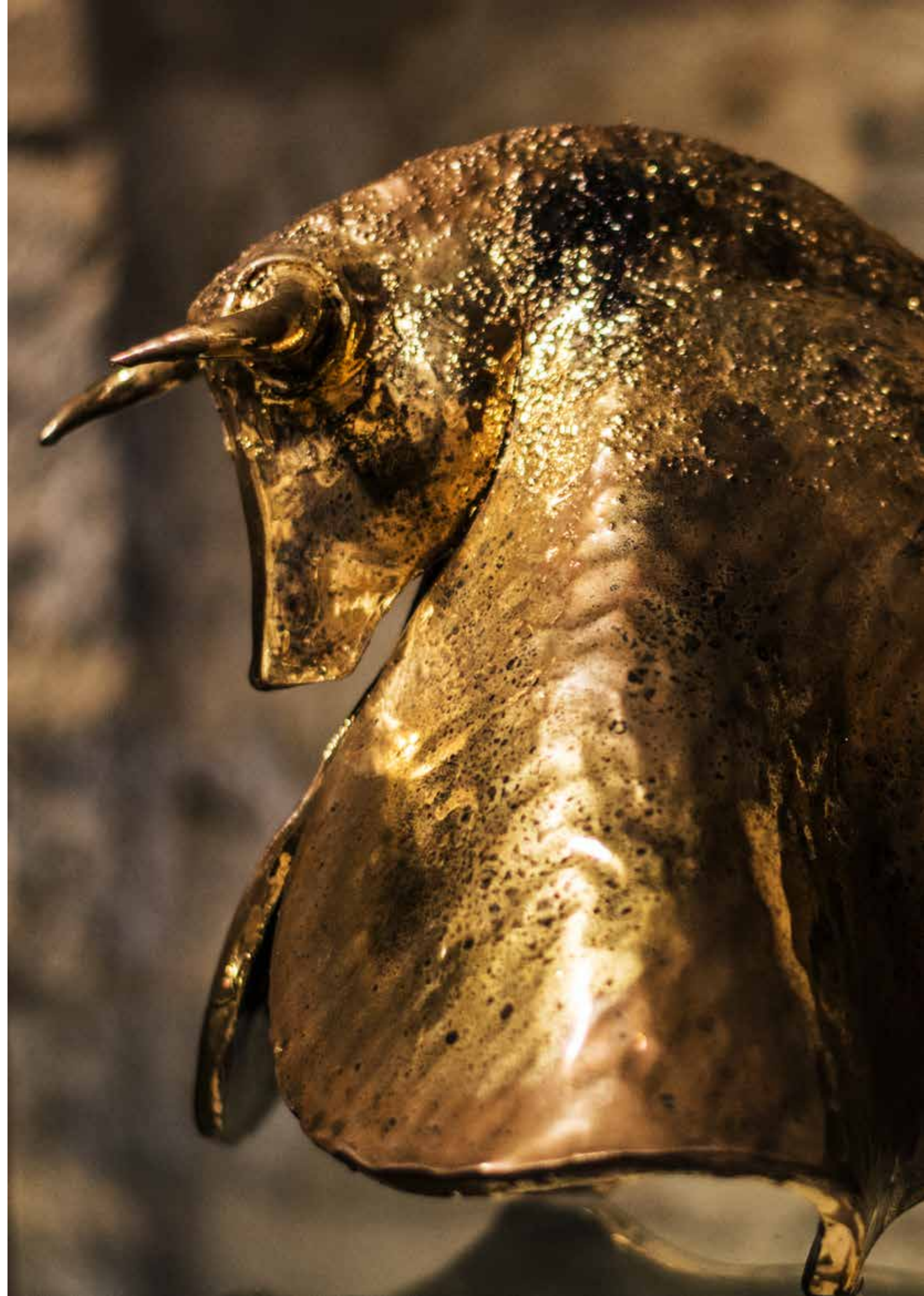


Luca Canavicchio

Florence, 1975

Permanent artist at iSculpture Gallery

Photo: "Bull" - Third firing Ceramic (Detail)





Fabrizio Lucchesi

Florence, 1965

Permanent artist at iSculpture Gallery

Photo: "Tuscan landscape with figure" - Mix Technique Ceramic

Simona Ragazzi

Bologna, 1969

Permanent artist at iSculpture Gallery

Photo: "Afrodite XXI Sec. D.C." - Semi-refractory Clay





with

Matteo Cocci
Irene Giannaccini
Tommaso Santucci

Relais Della Rovere

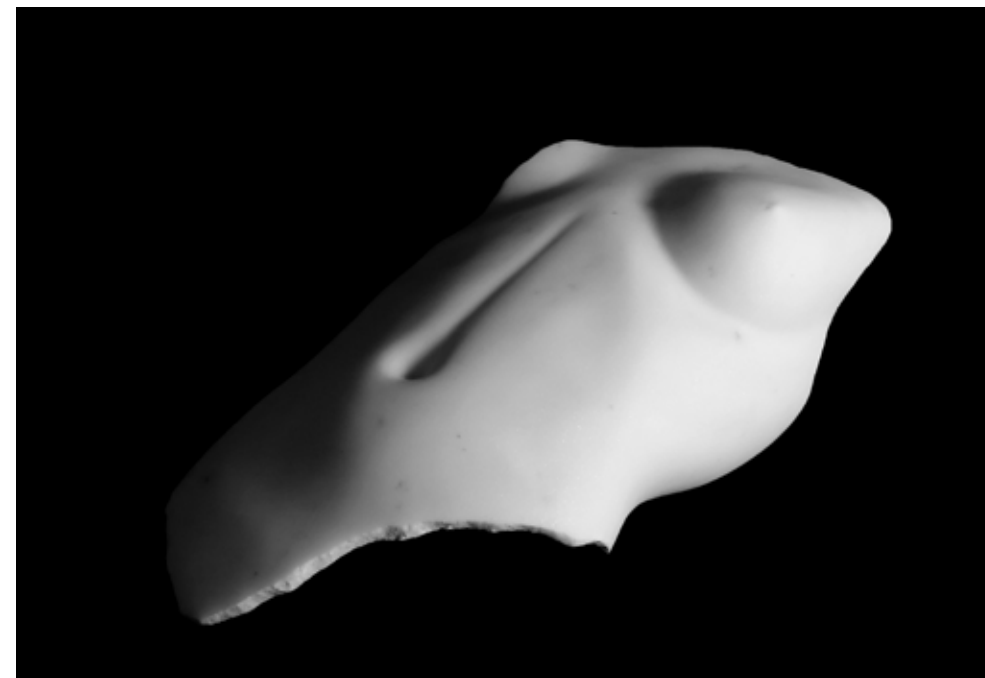
The Relais Della Rovere is a charming location created from the conversion of an ancient Benedictine abbey and a papal villa of the Renaissance period. It owes its name to its most illustrious owner: Cardinal Giuliano Della Rovere, who later became Pope Julius II, remembered as the patron of artists of the calibre of Michelangelo and Raphael.



Matteo Cocci



Irene Giannaccini



Tommaso Santucci





Matteo Cocci

Prato, 1973

Permanent artist at Francesca Sensi Arte a Colori Galleria

Photo: "Metafisica di Periferia" - Mix Technique on wood



Irene Giannaccini

Pietrasanta, 1983

Permanent artist at iSculpture Gallery

Photo: "Body" - Raku Ceramic

Tommaso Santucci

Pisa, 1981

Permanent artist at Francesca Sensi Arte a Colori Galleria

Photo: "Innamorami" - Mix Technique





***HOTEL SOVESTRO
RISTORANTE DA PODE

with

Marco Cipolli
Marco Manzella
Alessandro Marzetti

Hotel Sovestro

Situated in a delightful position just 2 km from the towers of the historical town of San Gimignano, the Hotel Sovestro complex stretches horizontally across a vast park of pine trees, coasted by vineyards, olive trees and luxuriant Tuscan and Mediterranean vegetation. Hotel Sovestro proposes the refined and characteristic hospitality of local tradition, with a vocation for art, nature and participation of the whole family in the running of the hotel, which is so apparent in the history, the people and profile of these hills.

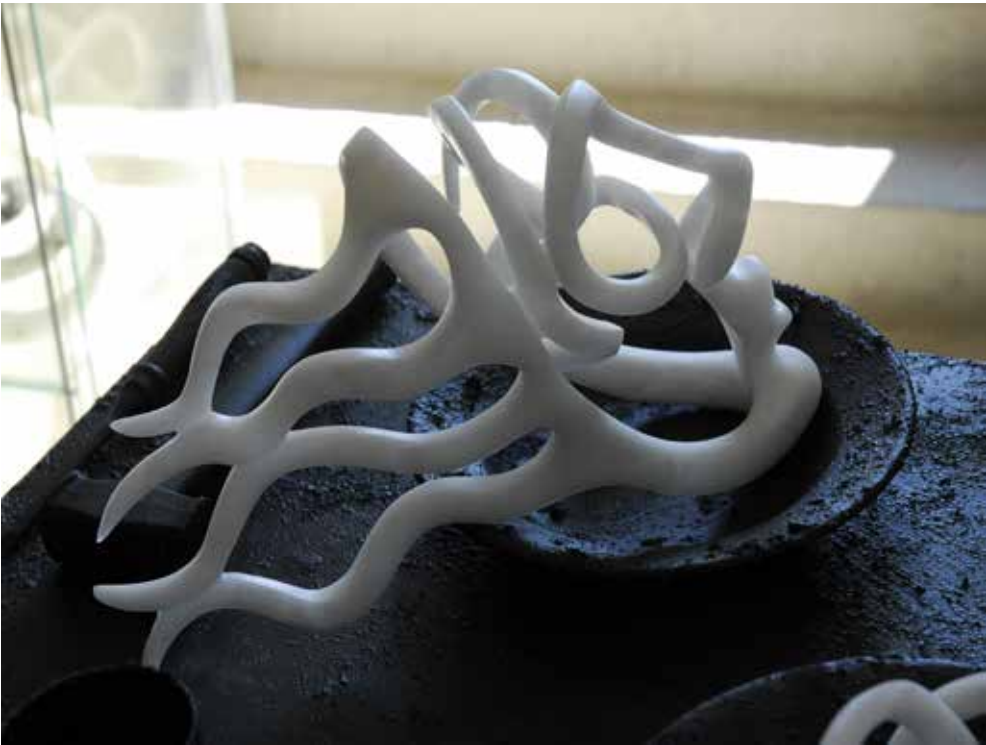


Marco Cipolli

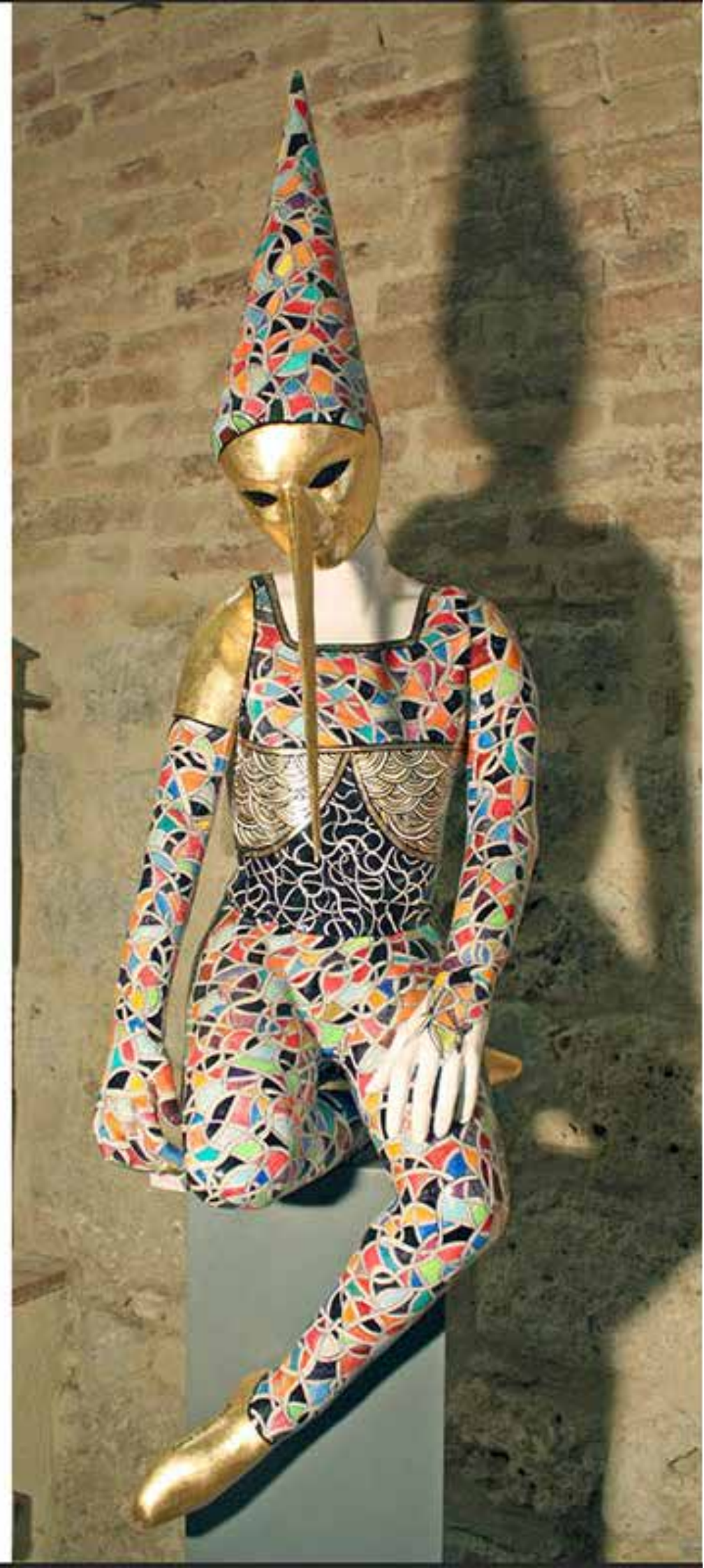


Marco Manzella

Alessandro Marzetti



Marco Cipolli
Montevarchi, 1957
Permanent artist at iSculpture Gallery
Photo: "Pinocchia" - Mix Technique





Marco Manzella

Livorno, 1962

Permanent artist at Francesca Sensi Arte a Colori Galleria

Photo: "Paesaggio con ragazza che finge di tuffarsi in un fiume"

Tempera on board

Alessandro Marzetti
Volterra, 1971
Permanent artist at iSculpture Gallery
Photo: "Testa" - White Alabaster





with

Elisa Bertaglia
Nicola Bertellotti
Susan Leyland

Hotel Villa San Lucchese

Villa San Lucchese Hotel in Poggibonsi, is a romantic Historic Villa from XV century and to-day a 4 stars Hotel near Siena, whose origins date back to early 1300 and whose name is linked to the history of the nearby Basilica of San Lucchese (next to the hotel) and its position overlooking the green hills of the Chianti valley planted with olive trees and vineyards.



Elisa Bertaglia



Nicola Bertellotti

Susan Leyland



Elisa Bertaglia

Rovigo, 1983

Permanent artist at Francesca Sensi Arte a Colori Galleria

Photo: **"Milky Way"** - Oil, Charcoal and Graphite on Paper





Nicola Bertellotti

Pietrasanta, 1976

Permanent artist at Francesca Sensi Arte a Colori Galleria

Photo: "Artist's Studio" - Fine art print on Panel

Susan Leyland

Whiston, Lancashire, 1952

Permanent artist at Francesca Sensi Arte a Colori Galleria

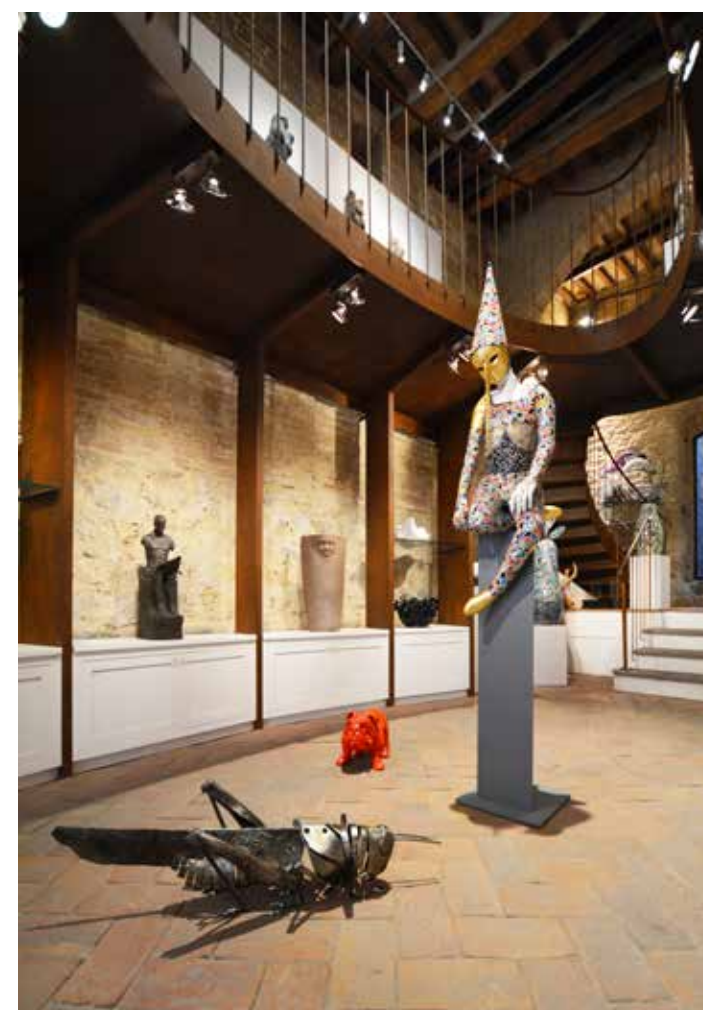
Photo: "Sensitive" - Semi-fire Clay





Arte A Colori is a Contemporary Art Gallery. Painting and sculpture, art and craft, well-known artists and art-beginners, live friendly together in this charming place, located in the heart of Tuscany.

The characteristic of Galleria Arte a Colori is mainly to organize events and theme exhibitions where the world of art meets social backgrounds. It uses identities and competence which have little to share with art intended in a traditional way. It also gives its space to endorse craftpeople and conceptual and theoretic expression. The director is Francesca Maria Sensi: she has a degree in History of Art and she specializes in contemporary art.



The project iSculpture, literally "Italian Sculpture", was born to promote those skills and knowledge that, treasuring tradition and past techniques, remain the excellence of our country.

Updated in the concept of "beauty", sculpture is perhaps the most complete art, in which matter and shape come together in a continuous challenge to renewal, without ever leaving a constant acquisition of consolidated parameters relating to balance and know-how.

The works of our selected artists represent a significant example of contemporary Italian sculptural production in the fields of ceramics, bronze, alabaster, wood, marble, iron and "new" materials. The selecting parameters are those of high technical ability and originality.



FRANCESCA SENSI ARTE A COLORI

COLLE VAL D'ELSA

Via Gracco del Secco, 66
tel. +39 0577 1981483
www.artecolori.it - artecolori@gmail.com



SAN GIMIGNANO

Via Berignano, 25
tel. +39 0577 940207
www.isculpture.it - info@isculpture.it

General Organization & Coordination My Tuscan Experience

Press & Social Media iSculpture Gallery & Francesca Sensi Arte A Colori

T e x t t r a n s l a t i o n Annalisa Coppolaro Nowell

Thanks to Antonella Cappelli, Nicola Cellerai, Sergio Failli,

Chiara Gigli, Marcoantonio Ninci, Patrick Pii, Emanuela Sensi

©My Tuscan Experience - All Rights Reserved

PRINTED IN OCTOBER

HOTEL 
BEL SOGGIORNO 


RelaisCappuccina
S A N G I M I G N A N O


Relais
Della Rovere
★ ★ ★ ★



***HOTEL SOVESTRO
RISTORANTE DA PODE


★ ★ ★ ★
Villa San Luce
✦ HOTEL ✦

My

TUSCAN EXPERIENCE



mytuscanexperience.com